

Table of Contents

USEFUL TOOLS	2
ER DIAGRAM (AVAILABLE ONLY IN FULL VERSION)	3
VIRTUAL GROUPING (AVAILABLE ONLY IN FULL VERSION)	6
CONNECTION COLORINGS	8
FAVORITES (AVAILABLE ONLY IN FULL VERSION)	9
FIND IN DATABASE (AVAILABLE ONLY IN FULL VERSION)	10
SEARCH FILTER	11

Useful Tools


Navicat provides variety of tools that improves user experience when using Navicat.

- [ER Diagram](#)
- [Virtual Grouping](#)
- [Connection Colorings](#)
- [Favorites](#)
- [Find in Database](#)
- [Search Filter](#)

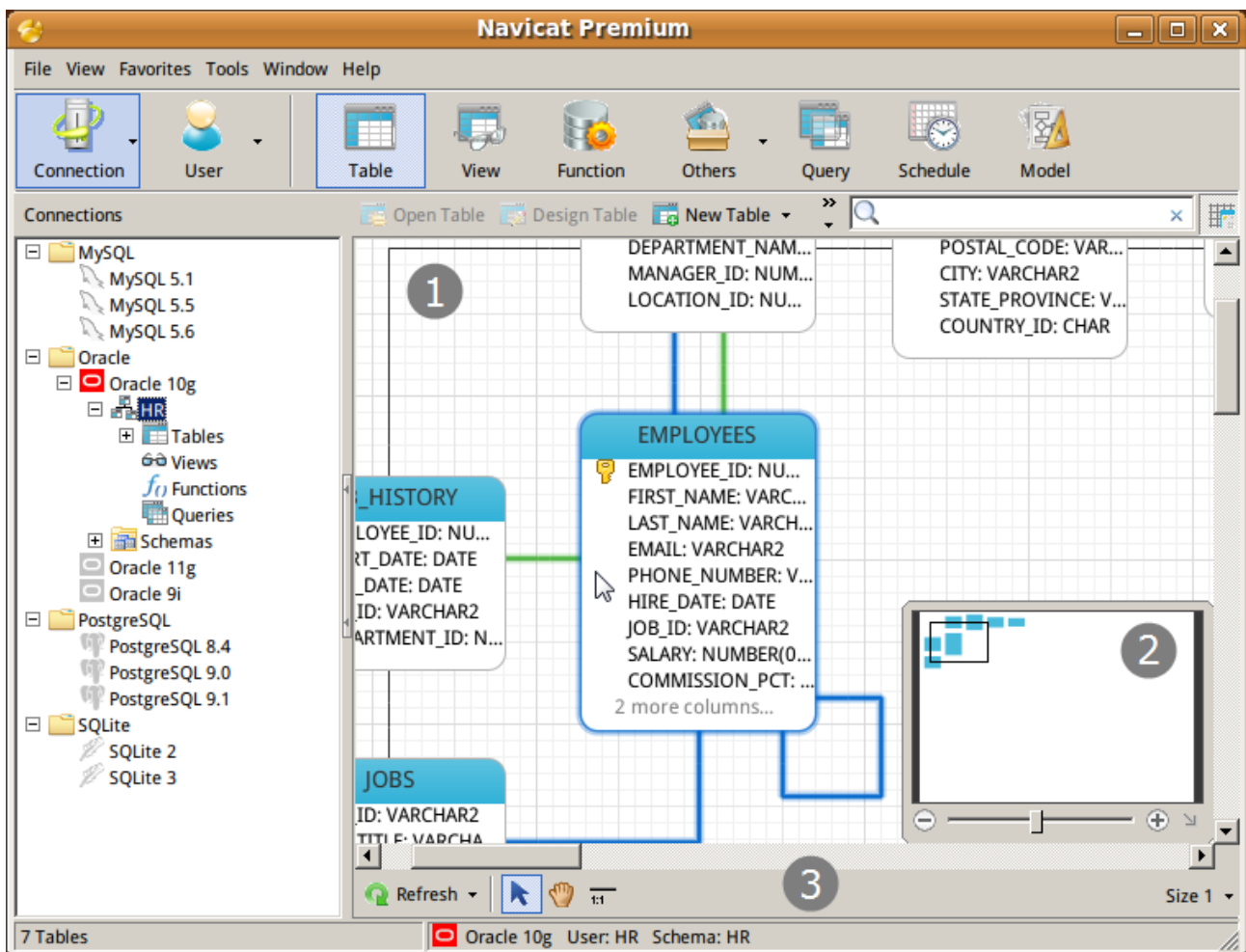
ER Diagram (Available only in Full Version)

Besides List and Detail views, Navicat enhances table viewing to a new ER Diagram view. In this ER Diagram view, you can view table fields and relationships between tables in a database/schema graphically. It also allows adding foreign key constraints to tables directly.

Note: Only tables provide ER Diagram view in Navicat. Other database objects only provide List view and Detail view.

Just simply choose View -> **ER Diagram** in the main menu or click  in the table object pane toolbar. An ER diagram will be created automatically if the selected database contains tables.

Hint: ER Diagram files are stored under Settings Save Path.



1. Object Pane

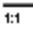
Displays table fields and relationships between tables in a database.

Note: Double-click a table in ER Diagram view will open the Table Designer, while double-click a table in List view and Detail view will open the Table Viewer.

Note: The tabs and options in the designer depend on the diagram database type you have chosen. For the settings of different tabs, see Database Object Management.

Add Relation

To add a relation

- Click  from the bottom toolbar.
- Drag the source table field and drop to the target table field.
- Edit foreign key properties in the Table Designer.

Edit Relation

To edit a relation

- Select the relation for editing in the object pane.
- Right-click and select the **Design Foreign Key** from the popup menu.
- Edit foreign key properties in the Table Designer.

Delete Relation

To delete a relation

- Select the relation for deleting in the object pane.
- Right-click and select the **Delete Foreign Key** from the popup menu.
- Confirm deleting in the dialog window.

Add Vertex to Relation

Select relation in diagram, then press and hold the Shift key. Click on the relation to add vertex.

Delete Vertex on Relation

Select relation in diagram, then press and hold the Shift key. Click on the vertex.

2. Navigator

To zoom in or zoom out the selected area of the diagram, adjust the slider of the Navigator. Same effect can be achieved with keyboard shortcuts:

Zoom In: [Ctrl++] or [Ctrl+Mousewheel up]



Zoom out: [Ctrl+-] or [Ctrl+Mousewheel down]

3. Toolbar

Refresh

Click to refresh the ER Diagram.

Regenerate ER Diagram

Click the  Refresh together with the  down arrow to choose **Regenerate ER Diagram**. It regenerates the ER Diagram with using auto layout feature.

Move Diagram

Click to switch to hand mode. Press and hold the Space key, then move the diagram.

New Relation

Click to create a relation between two table fields.

Paper Size

Select paper size from drop-down list, corresponding paper size will reflect in Navigator.

Virtual Grouping (Available only in Full Version)

Virtual Group aims to provide a platform for logical grouping objects by categories, so that all objects are effectively preserved.

Virtual Grouping can be applied on Connection, Table, View, Function, Query, Report, Backup and Schedule. Just simply right-click in the navigation pane and select **Manage Group** from the popup menu.

Create Group

To create a new group

- Select the panel (navigation pane/object pane) that you wish to apply the virtual grouping.
- Right-click and select **New Group** or **Manage Group** -> **New Group** from the popup menu.
- Define the group name.
- Right-click the object(s) (e.g. connection, table, view etc) and select **Manage Group** -> **Move To** from the popup menu.

Edit Group

To change the name of a group

- Select the group for editing in the navigation pane.
- Right-click and select the **Rename** from the popup menu.

Handle Group

To move the object(s) back to the top-level

- Select the object(s) for moving in the navigation pane.
- Right-click the object(s) and select **Manage Group** -> **Exclude From Group** from the popup menu.

Hidden Groups

To hide connection groups

- Choose **View** -> **Flatten Connection Tree**.

To hide object groups

- Choose **View** -> **Flatten Object List**.

Delete Group

To delete a group

- Select the group for deleting in the navigation pane.
- Right-click and select **Delete Group** from the popup menu.
- Confirm deleting in the dialog window.

Connection Colorings

Navicat provides highlighting connections by colors for identifying connections and their database objects. The highlighted color displays in connection name in navigation pane and menu bar in its database object window.

To highlight a connection, simply right-click the connection, select **Color** and your preferred color from the popup menu.

Favorites (Available only in Full Version)

Navicat Favorites are links to tables/views/other database objects that you visit frequently. By adding a path to your favorites list, you can go to that tables/views/other database objects with a single click, instead of having to navigate the connection and databases in the navigation pane.

Add Favorite

To add a link to the favorites list:

1. Open the database object.
2. Choose **File** -> **Add To Favorites...** or press Shift+Ctrl+#.
3. Enter the **Favorite Name** and select the **Favorite ID**.

Open Favorite

To open a database object from the favorites list:

1. Choose **Favorites** -> **favorite_name** in Navicat main window or press Ctrl+#.

Delete Favorite

To remove a link from the favorites list:

1. Choose **Favorites** -> **Clear Favorites** -> **favorite_name**.

To remove all links from the favorites list:

1. Choose **Favorites** -> **Clear Favorites** -> **Clear All**.

Note: # represents 0, 1, 2, 3, 4, 5, 6, 7, 8 or 9.


Find in Database (Available only in Full Version)

Navicat provides a **Find in Database** feature offers searching table records within a database.

- Select the database/schema.
- Right-click and select **Find in Database.../Find in Schema...** from the popup menu.
- Enter keyword and select the search criteria.
- Double-click the table in Find Results to view the record.

Search Filter

Search Filter allows you to filter the object names that contain the filter string in object pane.

Search Filter can be applied on Table, View, Function, Query, Report, Backup, Schedule and other database objects. Just simply click  and specify a filter string in the Navicat main window.

To remove the filter, simply delete the filter string.

